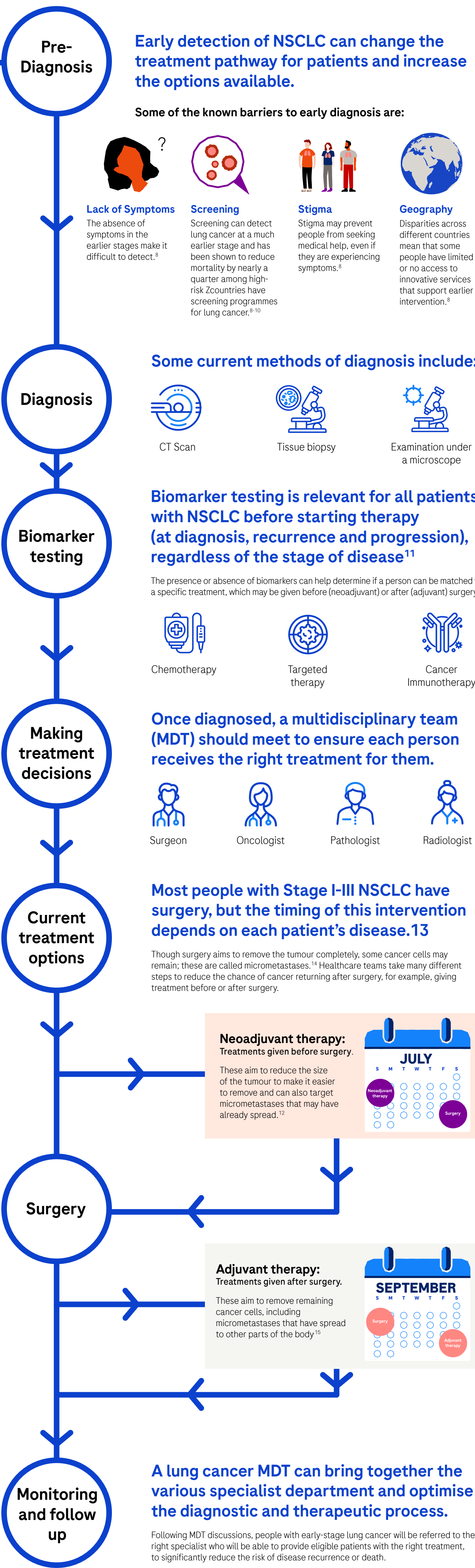




## A typical treatment journey for people with early-stage NSCLC

- Lung cancer remains the leading cause of cancer deaths worldwide and, despite recent advances, is one of the most difficult-to-treat cancers.<sup>1-3</sup>
- The earlier lung cancer is diagnosed, the more effective treatments can be. However approximately half of all people with early-stage NSCLC still experience a cancer recurrence following surgery, despite adjuvant chemotherapy.<sup>4-7</sup>
- Most recurrent tumours in NSCLC are metastatic (meaning they have spread to different parts of the body) and the cancer becomes incurable.<sup>4-7</sup> There is an urgent need for improved treatment options in early-stage disease to reduce the risk of lung cancer returning.



### The need for early treatment

At Roche, we are working closely with our partners – from patients and healthcare professionals to health systems and industry – towards our goal of treating NSCLC more effectively in its earliest stages when there is the best opportunity to help patients live longer, disease-free lives.

### References

1. World Health Organisation. World Globocan 2020. [internet; cited September 2023] Available from: <https://gco.iarc.fr/today/data/factsheets/populations/900-world-fact-sheets.pdf>. 2. Cancer.net. Information about Small Cell Lung Cancer. [internet; cited September 2023] Available from: <https://www.cancer.net/cancer-types/33776/view-all>. Accessed on September 2023. 3. Cancer.net. Information about Non-Small Cell Lung Cancer. [internet; cited September 2023] Available from: <https://www.cancer.net/cancer-types/lung-cancer/view-all>. 4. Pignon, et al. Lung adjuvant cisplatin evaluation: a pooled analysis by the LACE collaborative group. J Clin Oncol 2008. 5. Sasaki et al. Prognosis of recurrent non-small cell lung cancer following complete resection. Oncology letters 2014, 7(4), 1300-1304. 6. Felip, et al. Clinical cutoff: LR, locoregional, a post-hoc descriptive analysis. ESMO Presentation, 2021. 7. Hotta, et al. Meta-analysis of randomized clinical trials comparing cisplatin to carboplatin in patients with advanced non-small-cell lung cancer J Clin Oncol. (2004); 22(19):3852-9. 8. Cassim S, et al. Patient and carer perceived barriers to early presentation and diagnosis of lung cancer: a systematic review. BMC Cancer. 2019;19(1):25-9. 9. The National Lung Screening Trial Research Team. Reduced lung-cancer mortality with low-dose computed tomographic screening. N Engl J Med. 2011;365(5):395-409. 10. de Koning HJ, et al. Reduced Lung-Cancer Mortality with Volume CT Screening in a Randomized Trial. N Engl J Med. 2020;382:503-513. 11. Rodriguez M, et al. Molecular biomarkers in early stage lung cancer. Transl Lung Cancer Res. 2021 Feb;10(2):1165-1185. 12. Versteijne JM, et al. Learning from clinical trials of neoadjuvant checkpoint blockade. Nature. 2020;26(4):475-484. 13. Raman V, et al. Surgical treatment for early stage non-small cell lung cancer. J Thorac Dis. 2018;10(Suppl 7):S898-S904. 14. National Cancer Institute. Cancer Terms: Micrometastasis [internet; cited September 2023]. Available from: <https://www.cancer.gov/publications/dictionaries/cancer-terms/def/micrometastasis>. 15. Lim JU, et al. Update on adjuvant therapy in completely resected NSCLC patients. Thorac Cancer. 2022; 13(3): 277-283